

# XL GSTA

BEYOND TRAVEL MANAGEMENT

AN ASSOCIATE MEMBER OF THE XL TRAVEL GROUP

MAR-APR 2020  
ISSUE 02

ex JNB

**LONDON**

From  
**R8 484**

R1280 + R7 204 TAXES

**LONDON Direct**

From  
**R9 959**

R1 390 + R8 569 TAXES

**ROME**

From  
**R8 456**

R900 + R7 556 TAXES

**PARIS**

From  
**R9 460**

R1 920 + R7 540 TAXES

**HONG KONG**

From  
**R10 018**

R2 770 + R7 248 TAXES

**NEW YORK**

From  
**R10 155**

R1 630 + R8 525 TAXES

**SYDNEY**

From  
**R14 016**

R5 150 + R8 866 TAXES

**CAPE TOWN**

From  
**R1 098**

ONE WAY

**DURBAN**

From  
**R1 105**

ONE WAY

ex CPT

**LONDON**

From  
**R10 155**

R1 730 + R8 425 TAXES

**LONDON Direct**

From  
**R9 478**

R2 960 + R6 518 TAXES

**ROME**

From  
**R8 196**

R1 300 + R6 896 TAXES

**PARIS**

From  
**R9 078**

R1 800 + R7 278 TAXES

**HONG KONG**

From  
**R8 698**

R1 350 + R7 348 TAXES

**NEW YORK**

From  
**R10 796**

R1 610 + R9 186 TAXES

**SYDNEY**

From  
**R13 810**

R5 360 + R8 450 TAXES

**DURBAN**

From  
**R895**

ONE WAY

**JOBURG**

From  
**R803**

ONE WAY

ex DUR

**LONDON**

From  
**R9 145**

R1 790 + R7 355 TAXES

**LONDON Direct**

From  
**R9 110**

R1 860 + R7 250 TAXES

**ROME**

From  
**R8 416**

R1 520 + R6 896 TAXES

**PARIS**

From  
**R9 308**

R2 030 + R7 278 TAXES

**HONG KONG**

From  
**R10 388**

R3 040 + R7 348 TAXES

**NEW YORK**

From  
**R10 796**

R1 610 + R9 186 TAXES

**SYDNEY**

From  
**R13 900**

R5 450 + R8 450 TAXES

**CAPE TOWN**

From  
**R962**

ONE WAY

**JOBURG**

From  
**R903**

ONE WAY

Strict Terms & Conditions apply: All fares are subject to availability at time of booking, currency fluctuations and change without prior notice. These fares are correct and available at time of going to print (03.03.2020). Fares exclude agency fees.

**Let's map  
it out for you**



\*Correct at time of going to print: 03.03.2020

[www.gsta.co.za](http://www.gsta.co.za)



# WONDERS of Turkey

11 Days – 1 Country

Gifted with natural and ancient wonders, discover Turkey's finest gems including Göreme, the white terraces of Pamukkale and Ephesus, dating back to the 10th century B.C.

FROM  
**R29 200<sup>PPS</sup>**

Valid for travel on selected departure dates between 30 April 2020 and 15 October 2020

## Inclusions

10 nights' accommodation in hand-picked hotels in the best locations  
10 Breakfasts  
1 Lunch  
8 Dinners  
16 Sightseeing experiences, including unique Insight Experiences and top-rated highlights

# EASY PACE Russia

8 Days – 1 Country

Experience the grandeur of Russia, exploring the baroque architecture of St Petersburg and the palaces of Moscow. Marvel at the famous art collection of the Hermitage Museum and travel by hydrofoil and high-speed train in perfect style.

FROM  
**R34 300<sup>PPS</sup>**

Valid for travel on selected departure dates between 12 April 2020 and 27 September 2020

## Inclusions

7 nights' accommodation in hand-picked hotels in the best locations  
7 Breakfasts  
2 Dinners  
8 Sightseeing experiences, including unique Insight Experiences and top-rated highlights

## BOTH PACKAGES INCLUDE:

Airport transfers on first and last travel day (Conditions apply) // Travel in a customized 40-seater coach with extra legroom and free onboard Wi-Fi // Accompanied by a passionate and knowledgeable Travel Director // Enjoy smaller group camaraderie with an average of 33 guests in a group

### Terms & Conditions:

- The prices are per person sharing and are subject to availability.
- A R3000 per person deposit is due within 3 days to secure your booking and full payment is due 60 days prior to departure.
- Selected departure dates between 30 April 2020 and 15 October 2020
- The trip price does not include the costs of international flights (to/from the start or end the trip).
- Price is per person based on a lead in rate and subject to availability depending on the departure date. (High and low season rates apply).
- Single supplement rates available on request.
- All cancellation policies apply as per Insight Vacations Premium 2020 Europe & Britain brochure.

**INSIGHT VACATIONS®**  
*The Art of Traveling in Style®*

# *TIME FLIES, SO SHOULD YOU*

Enjoy your journey to your destination.  
Expect an experience nothing less than excellent  
with Etihad Airways.



الاتحاد  
**ETIHAD**  
AIRWAYS

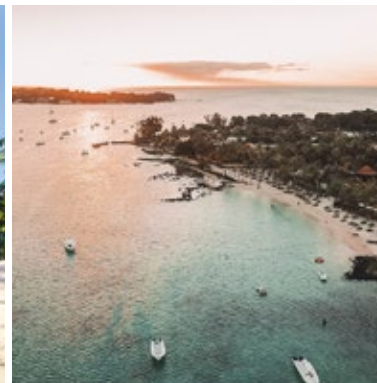


## 4 Star Mauricia Beachcomber Resort & Spa

The smart-casual character of Mauricia blends high quality accommodation with superb service. Inspired by contemporary design trends, this hotel attracts vibrant guests whose priorities for their island getaway include – in addition to the highest quality accommodation in this price bracket – sport, entertainment, health and fitness. Mauricia Beachcomber exudes a lively atmosphere, spacious public areas that optimise the dreamy beach views and modern touches that add impeccable attention detail.

FROM **R16 170** PPS

Valid for travel 01 – 11 Jun 2020



## PLUS FACTORS

- + 25% discount included on land package
- + 25% off all-inclusive
- + 3 for 1! All facilities between the three 4-star resorts are interchangeable
- + 15 % off spa treatments
- + 10%-20% saving on selected excursions
- + Plus an extra 5% off should you qualify as our Repeat Guest

### BOTH PACKAGES INCLUDE

- Return airfare ex JNB with lounge access
- Approximate airport taxes
- Return transfers
- 5-nights' accommodation
- Breakfast & dinner daily
- Free land & motorised water sports as per brochure



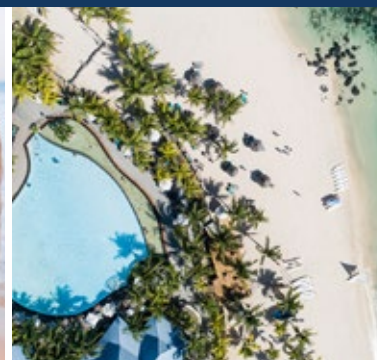
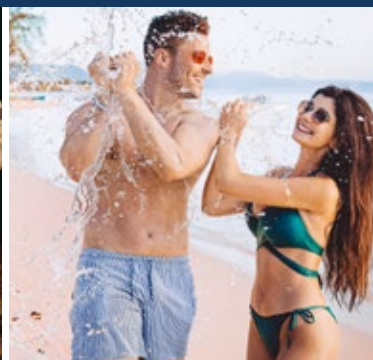
Ts & Cs: Rates are subject to availability at time of booking & rate of exchange changes prior to full payment being received. Business class lounge access in JNB, subject to Air Mauritius Ts and Cs. Terms & conditions apply.

## 4 Star Superior Victoria Beachcomber Resort & Spa

There's no way of guessing the kinds of visitors who specifically prefer Victoria, because it quickly becomes the number one resort for every kind of guest, be it they are families, honeymooners or conference-goers. Breathtakingly beautiful public areas are one of the exceptional features that define this resort.

FROM **R17 360** PPS

Valid for travel 01 – 11 Jun 2020



Take a load off! Avoid embarrassing mid-airport repacking, being turned away by security or worse, a hefty overweight fee. Your **ASATA accredited** XL Travel agent knows how much luggage you're allowed.

